

Ruscool Proline21 Autopilot

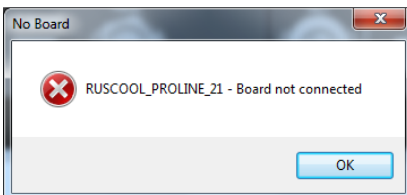
This software can be used for standalone testing of the Ruscool Proline21 Autopilot, or for communication between the Proline21 panel and FSUIPC within Flight Simulator.

Start the software and it will appear minimised on the taskbar.
Click on the taskbar icon and the below screen will be shown.



This message will pop-up if the Ruscool Proline21 Autopilot connection cannot be found.

- Check the USB connection between the autopilot and the computer.
- If Device Manager shows an error, you may need to manually install the driver from the below address <https://www.silabs.com/products/development-tools/software/usb-to-uart-bridge-vcp-drivers>



When a button on the Ruscool Proline21 Autopilot is pressed, the software will display the value coming from the panel in the 'Input' box (eg A1, B64, etc) This is the value that identifies which button is being pressed.



The corresponding button will highlight green when it is 'ON' and revert to gray when it is 'OFF'. Encoder buttons show green when 'ON' and gray when 'OFF' and as the encoder is moved, the value on the screen will increment/decrement accordingly.

If FSUIPC is running, the corresponding offset values are sent to Flight Simulator which will control the simulator.